

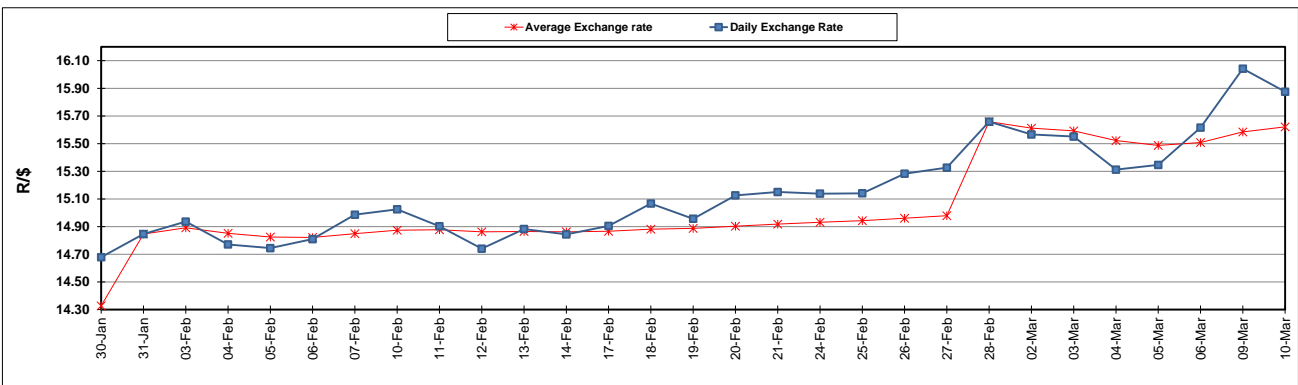
	PETROL 95 ULP	PETROL 93 ULP & LRP	DIESEL 0.05%	DIESEL 0.005%	ILL. PAR.
GAUTENG PUMP PRICE (SA c/l) AS FROM 04/03/2020	1,584.000	1,552.000	-	-	-
WHOLESALE PRICE (SA c/l) AS FROM 04/03/2020	-	-	1,403.260	1,408.660	856.728
SINGLE NATIONAL MAXIMUM RETAIL PRICE	-	-	-	-	1,085.000
BASIC FUEL PRICE - 10/03/2020 (SA c/l)	501.981	492.474	527.345	530.391	509.285
PRESS RELEASE CONTRIBUTION TO BFP 04/03/2020 - 10/03/2020 (SA c/l)	667.970	645.970	683.630	689.030	666.128
UNIT OVER/(UNDER) RECOVERY - 10/03/2020 (SA c/l)	165.989	153.496	156.285	158.639	156.843
AVERAGE BASIC FUEL PRICE 28/02/2020 - 10/03/2020	585.761	573.798	605.091	609.025	585.443
AVERAGE UNIT OVER/(UNDER) RECOVERY 28/02/2020 - 10/03/2020	89.334	79.297	98.789	100.255	106.185

ANALYSIS MOVEMENT OF AVERAGE OVER/(UNDER) RECOVERY

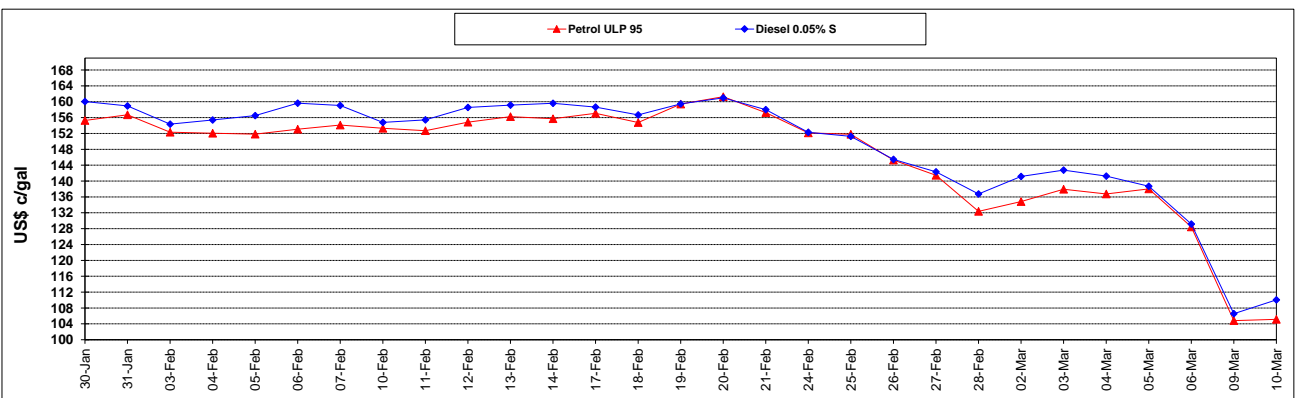
	PETROL 95	PETROL 93	DIESEL 0.05%	DIESEL 0.005%	ILL. PAR.
- MOVEMENT IN INTERNATIONAL PRODUCT PRICES	113.408	102.879	123.658	125.285	130.246
- MOVEMENT IN EXCHANGE RATE	(24.074)	(23.582)	(24.869)	(25.030)	(24.061)
AVERAGE UNIT OVER/(UNDER) RECOVERY 28/02/2020 - 10/03/2020	89.334	79.297	98.789	100.255	106.185

R/\$ EXCHANGE RATE - (R/\$ 15.8753 - 10/03/2020)

EXCHANGE RATE USED IN BASIC FUEL PRICE



INTERNATIONAL PRODUCT PRICES OF BASKET USED IN BASIC FUEL PRICE



BASIC FUEL PRICE IN SA CENTS PER LITRE

